

Trio No. 4: Allegro.

Bassoon

1 *f* 3

6

12

17

22

28 1st 2nd *p* *f*

33

38 *sfz*

44 *p* *f* 3

50

56

62 *p* *f*

69 1st 2nd 2/4

Trio No. 2: Andante. Theme: The Lady's Looking Glass

75



82



Variation 1

89



96



Variation 2

103



110



Variation 3

117



123



Variation 4

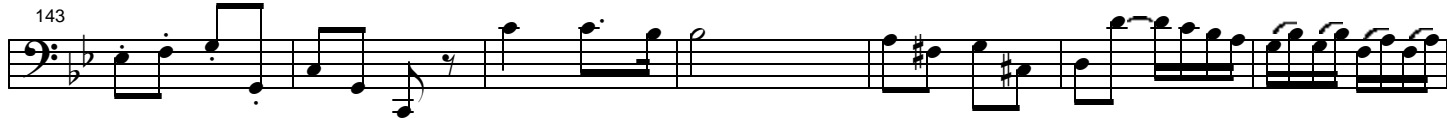
130



136



143

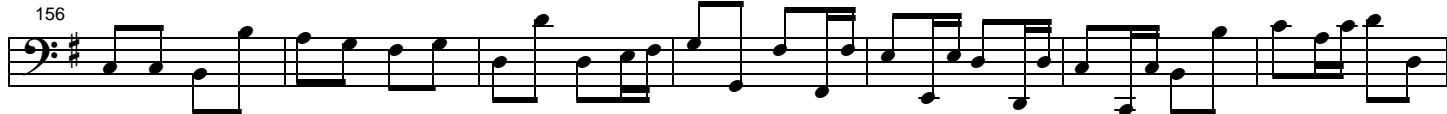


Allegro. Variation 5

150



156



163

p 1st 2nd *f*

170

175